

Spoorlaar upgrade for Fleischmann V100 / BR 212 / BR 211 / Rh 2048



Properties:

- NEXT18 connector
- LED front and tail lights
- **AUX3 and AUX4 connection***
- **Stay-alive capacitor connection***

*Expend version only

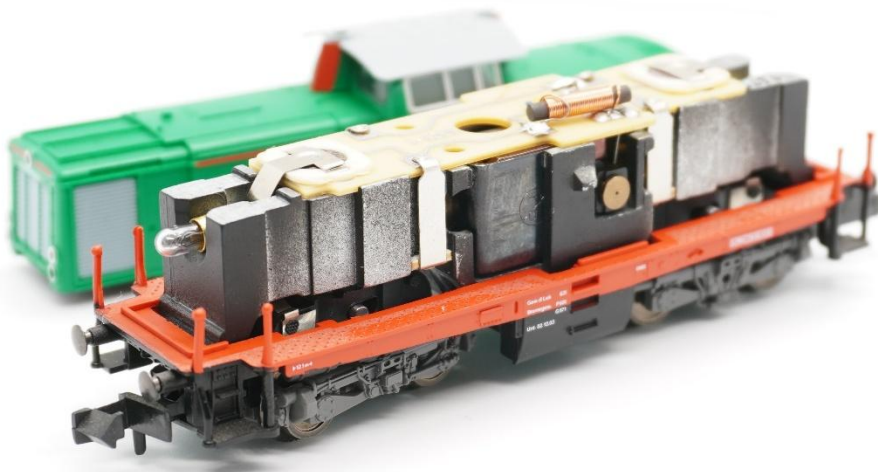
Function mapping:

Output decoder	Function on the board	Comment
Ff	Front lights long hood	
Fr	Front lights short hood	
AUX1	Tail lights long hood	
AUX2	Tail lights short hood	
AUX3	Output A3 (max 100mA)	Expended version only
AUX4	Output A4 (max 100mA)	Expended version only

Installation:

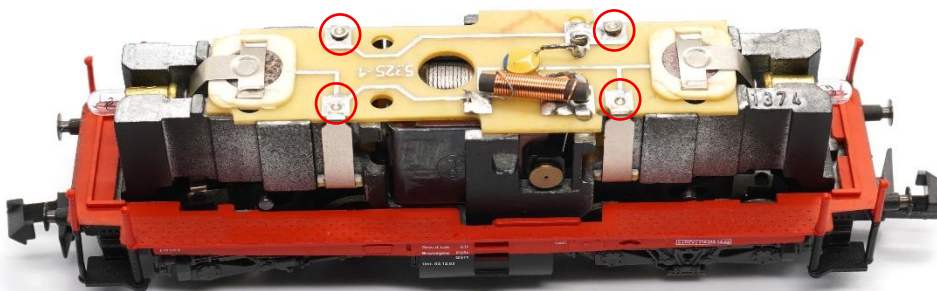
Step 1:

Remove the body from the chassis.



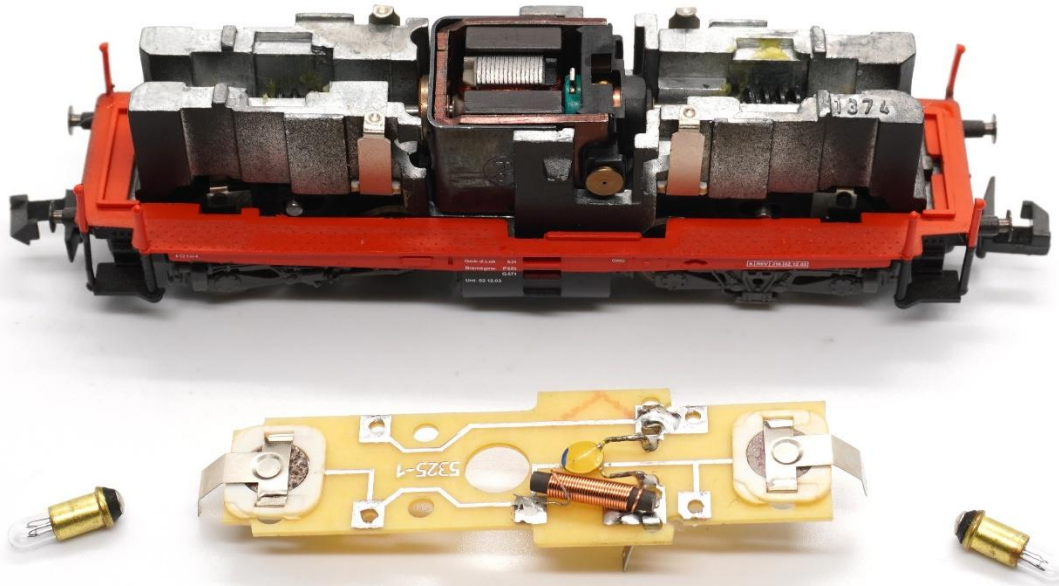
Step 2:

Remove the clips from the old board.



Step 3:

Remove the old board together with the bulbs.



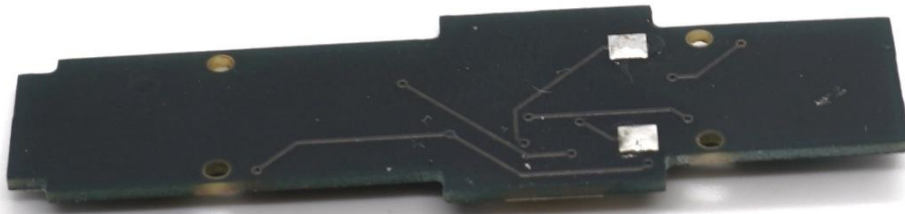
Step 4:

Carefully cut the motor contacts from the old board.



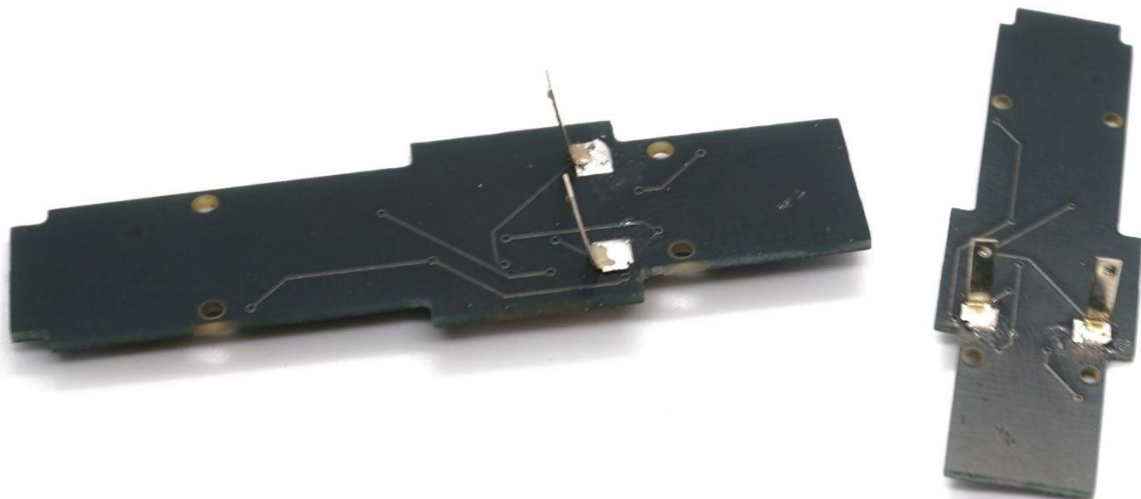
Step 5:

Add a bit of solder to the pads under the new board.



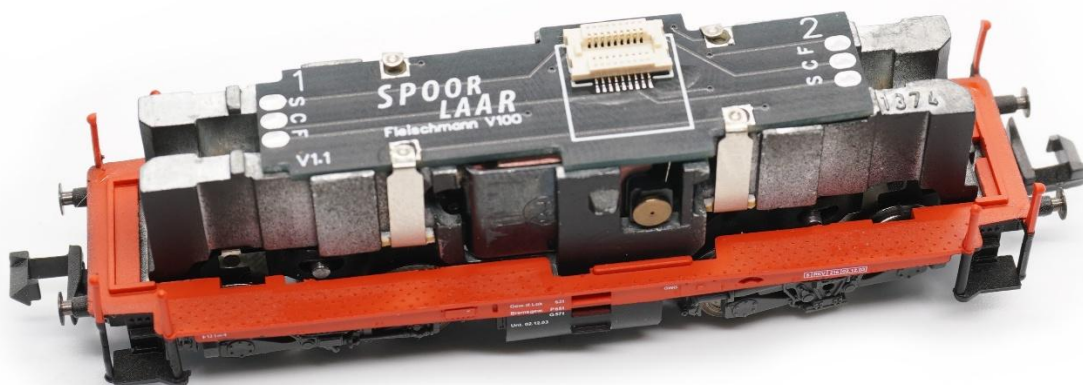
Step 6:

Solder the motor contacts to the bottom of the new board. Make sure there is enough space between the contacts for the motor to fit.



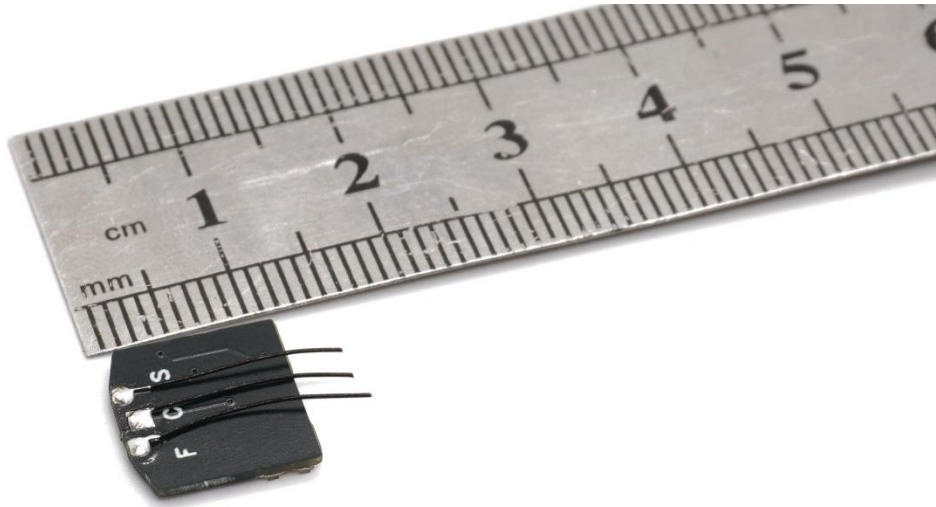
Step 7:

Clip the new board to the chassis.



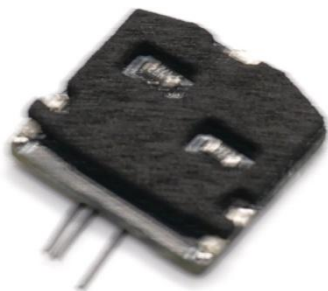
Step 8:

Solder three wires , around 15 – 20 mm in length, to both of the LED boards.



Step 9:

Stick the foam light masks to the LED boards.



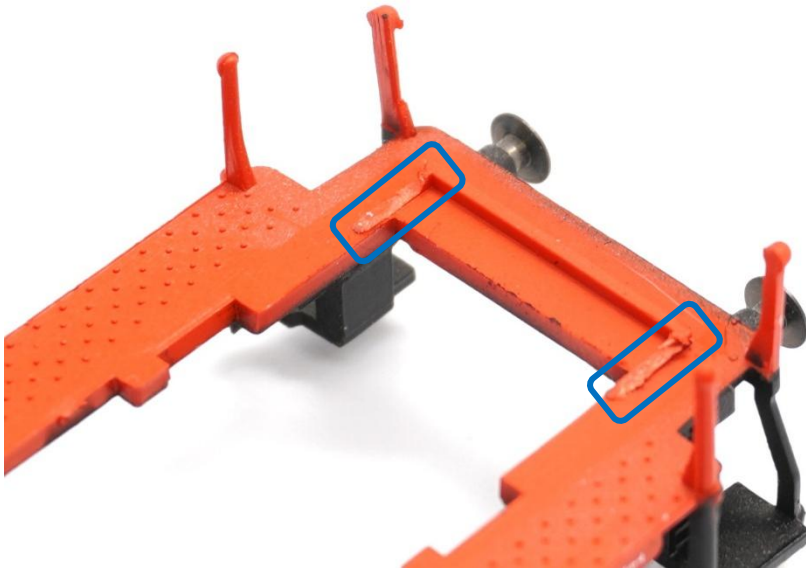
Step 10:

Remove the plastic frame from the chassis.



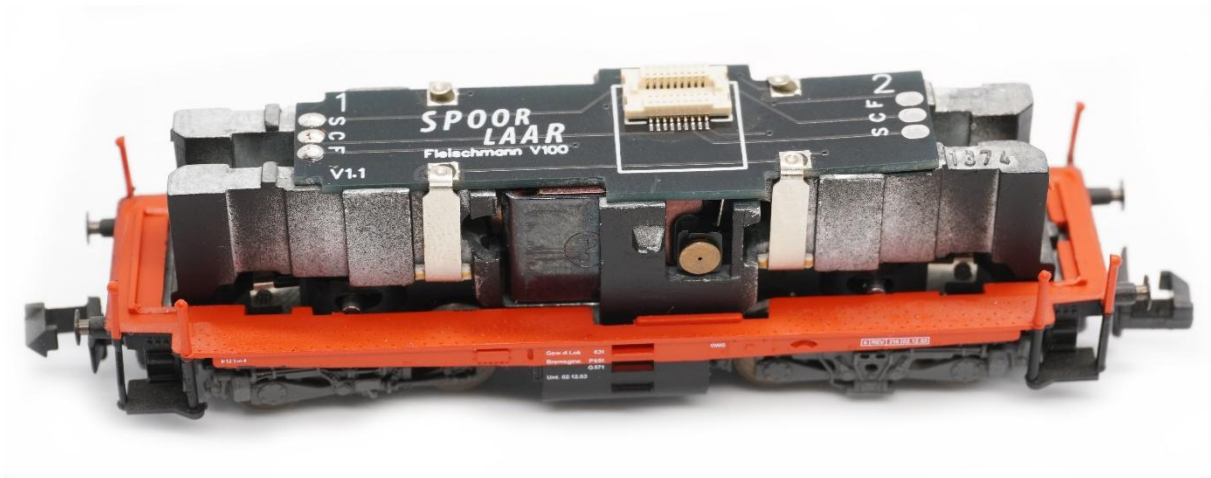
Step 11:

Carefully cut the side from the little lip using a (hobby) knife. Do this for both sides.



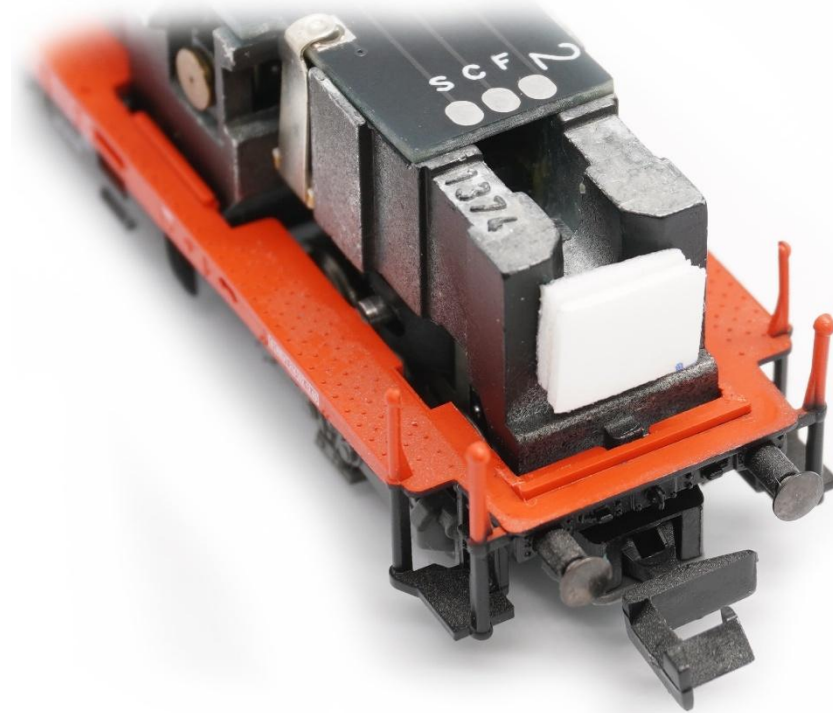
Step 12:

Place the frame back on the chassis.



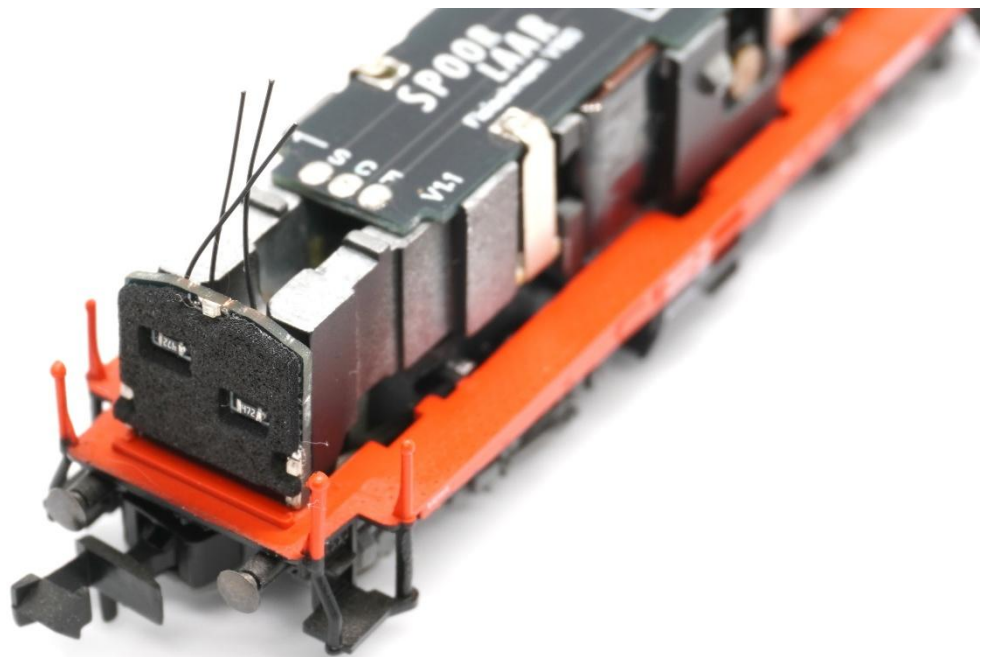
Step 13:

On both sides, stick two stacked pieces of double sided tape.



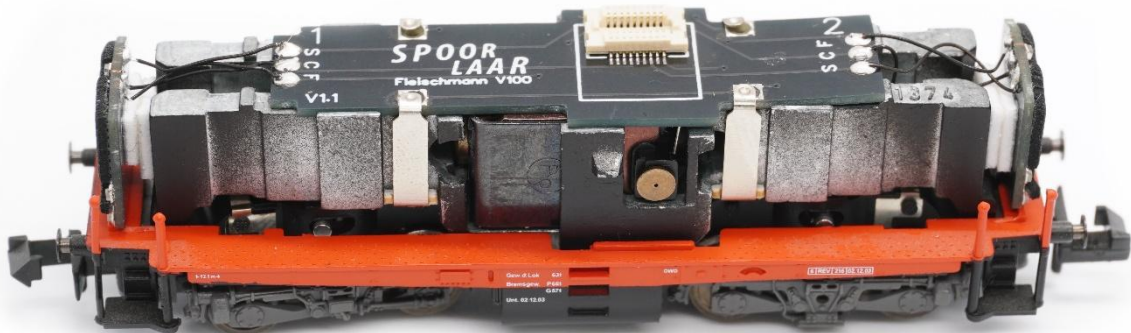
Step 14:

Stick the LED boards on the tape.



Step 15:

Solder the LED boards on de new board.



Step 16:

Place a decoder. Check if everything works correctly/

Bad contact between board and clips? Remove the clips from the board and add a little bit of solder to the pads.



Step 17:

Remove the light guides from the body.



Step 18:

Carefully drill out the tail lights using a 1 mm drill bit. Afterwards fill the holes using some Kristal Klear or transparent drying glue.



Step 19:

Place the body back on the chassis.



The installation is now finished.